

Welcome Back to 2020-2021

Rosmini Community School



Welcome Back

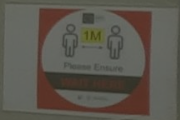
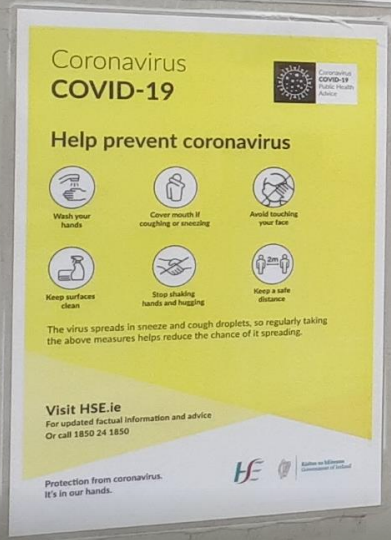
Mr D'Arcy

Ms
O'Donovan

Anxiety

Public Health
Advice

The steps we
have
taken...One-
way system



The steps we have
taken...Information
Signage



The steps we
have
taken...Re-
assigned
cabins



Portakabin **Titan**[®]



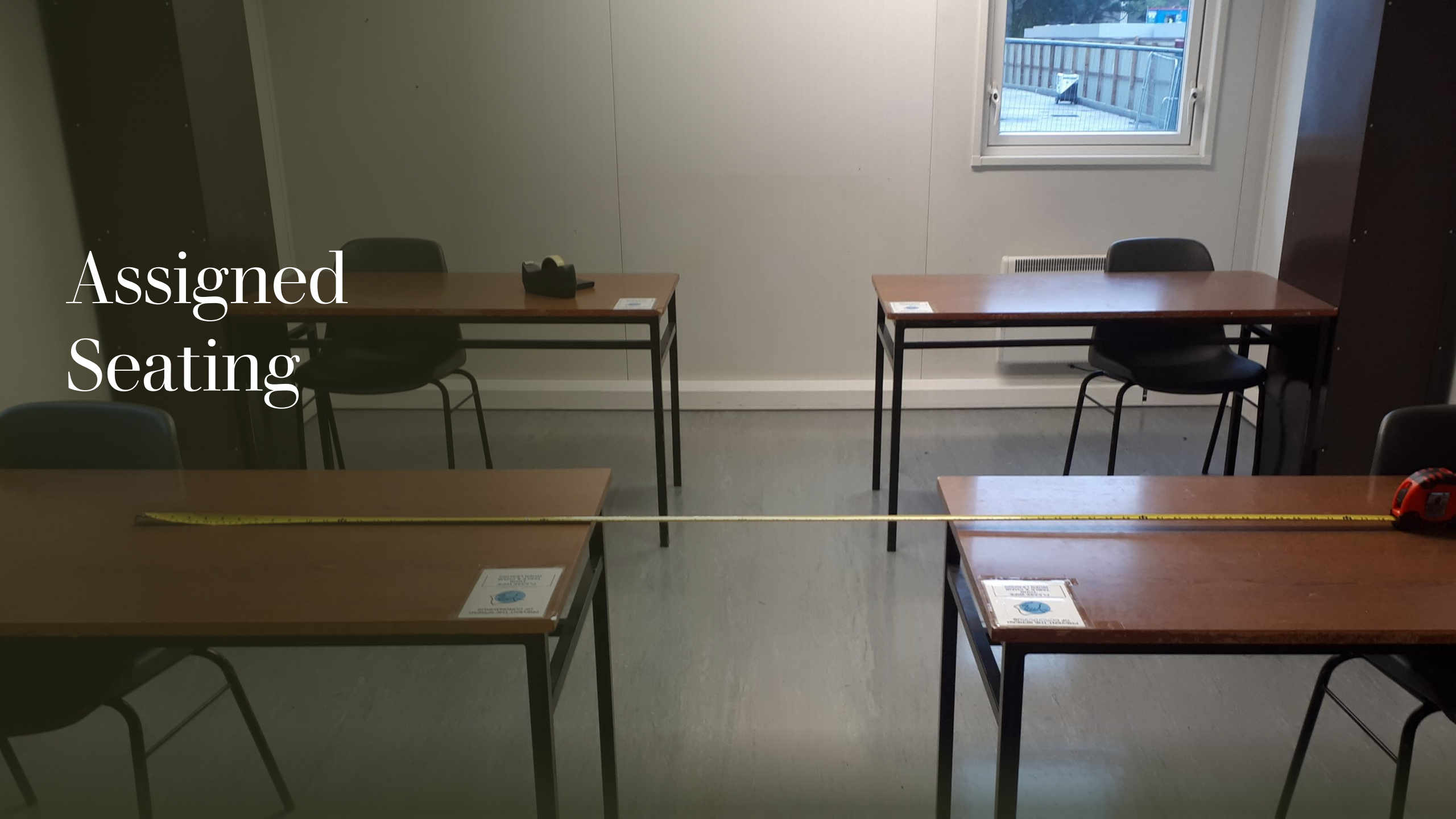
The steps we have
taken...Two-Metre
Social Distancing in
place school-wide



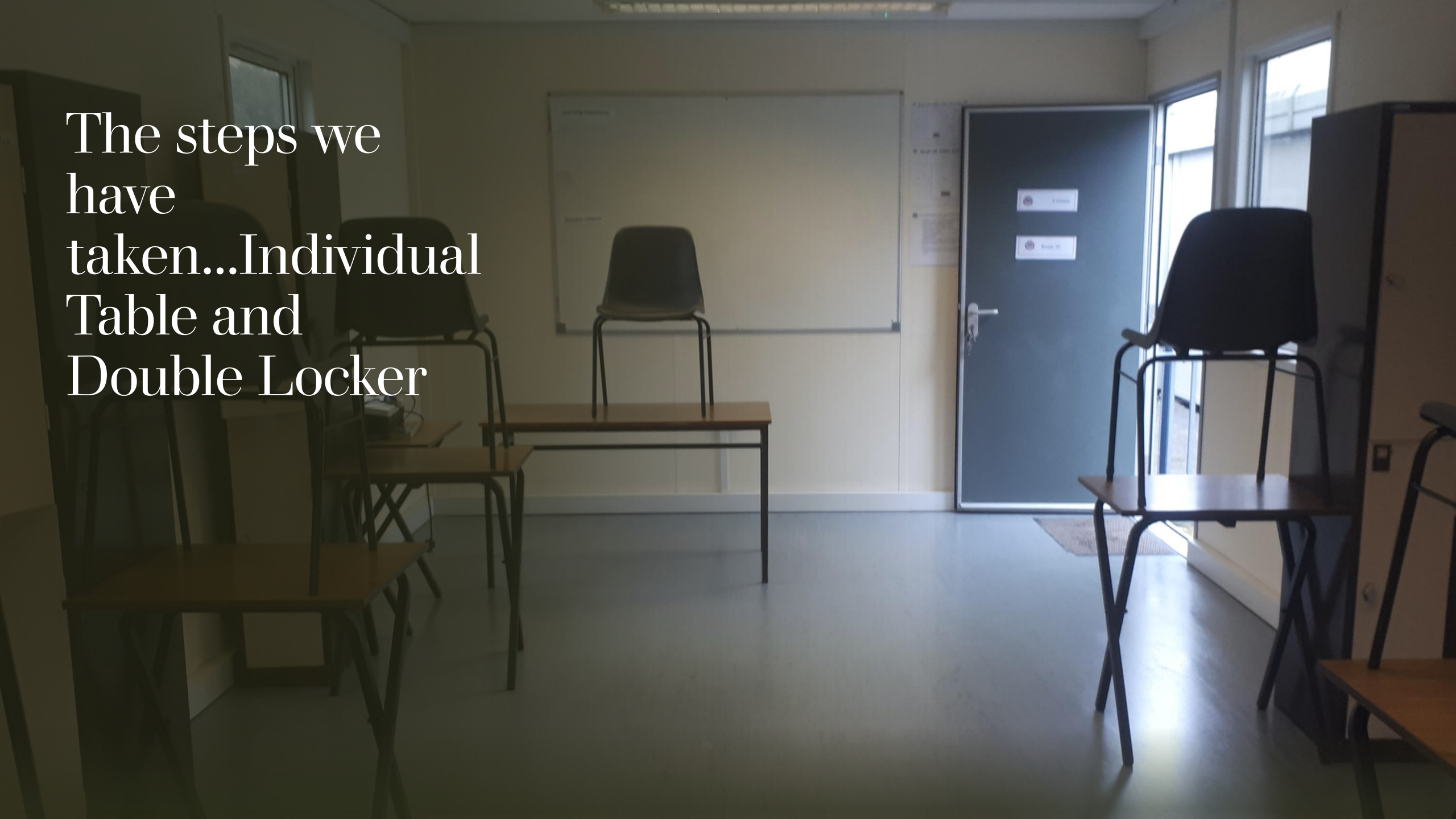
The steps we
have
taken...Year
Group split



Assigned Seating



The steps we
have
taken...Individual
Table and
Double Locker



Split Classes

- Video broadcasting between cabins where a class group is split (as required)
- Students will be able to watch the teacher on the screen and therefore participate in the class



Students must be responsible for their own station...





Book Rental Scheme...Over the next few weeks

First Year students will receive their textbooks

Second Year students will get back their
books....once checked

Fifth Year students will receive their textbooks

Sixth Year students will get back their books...once
checked

Contact: donal.digan@rosmini.ie

Uniform

- Full uniform to be worn unless Public Health Advice changes
- Shoes must be worn with the school uniform
- PE uniform is only to be worn on the day the students have PE




Reopening of our Schools (Department Document)

- Supporting and Promoting Good Hand Hygiene
- Enhanced Cleaning Regimes in our Schools
- Maintaining Physical Distancing in our School
- Purchase of PPE



Reopening Our Schools

The Roadmap for the Full Return to School

27th July 2020



We require
that each
student has in
their locker...



A bottle of hand
sanitizer

A pack of wipes

A mask (to be stored in
a resealable bag)

Face Coverings

- The updated advice from the HPSC to the Department of Education has recommended that face coverings should be worn by staff members where it is not possible to maintain a physical distance of 2 metres from other staff, parents, essential visitors or pupils. The Department has accepted this recommendation. Accordingly, it is now a requirement for face coverings to be worn by staff members where it is not possible to maintain a physical distance of 2 metres from other staff, parents, essential visitors or pupils.
- Therefore all staff and students are required to wear face coverings when social distancing cannot be maintained

Wearing a face covering protects others.

They help stop the spread of coronavirus and they are a way of showing we care about each other.

Why you should wear a face covering

- > COVID-19 is highly infectious and people can spread the virus without having the symptoms
- > wearing a cloth face covering helps people who do not know they have the virus from spreading it to others

When to wear a face covering
In indoor settings when staying 2 metres apart is difficult, like:

- Going shopping
- Travelling on public transport
- Visiting or meeting someone who is over 70 or more at risk

How to wear a face covering

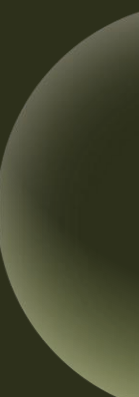
- > carry some clean waterproof bags and use them to carry clean or used face coverings separately
- > clean your hands properly before you put it on
- > cover your mouth and nose and make sure there are no gaps
- > do not touch a face covering while wearing it - if you do, clean your hands properly
- > do not lower it to speak, eat, smoke or vape
- > if you need to take it off, put in a plastic bag and don't wear it again until it's washed
- > always take it off from behind your head or your ear, don't touch the front
- > wash it after use in a hot wash over 60 degrees with detergent

Not everyone can wear a face covering
Face coverings are not needed for:

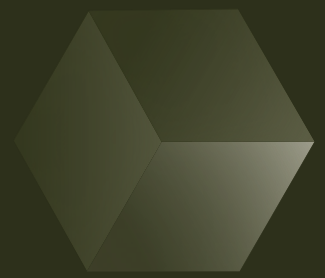
- > children under 13
- > people who have breathing problems
- > people who have a disability that means using a face covering would be very difficult
- > some people, including people with dementia, may find face coverings strange or unsettling at first

For more advice on staying safe and how to wear a face covering, visit [hse.ie](#)

Face Coverings – When PPE will be worn

- performing intimate care
 - where a suspected case of COVID-19 is identified while the school is in operation
 - where staff are particularly vulnerable to infection but are not in the list of those categorised as people in very high-risk groups, or may be living with people who are in a very high-risk category;
 - administering first aid
 - parent Teacher meetings
- 

Important



- **IMPORTANT:** The purpose of wearing a mask is not to protect themselves...but to reduce onward transmission
- Face coverings should be stored in a space designated for each student that is separate from others when not being worn (e.g., in individually labelled containers or bags).



Important!

- Face coverings must be APPROPRIATE
- It cannot cause offence to another member of the school community



If your son /
daughter
does not feel
well...

They should not come to school!

Make contact with your GP

COVID-19 related referrals remain free

STAY

HOME

SAVE LIVES

#STAYHOME

What happens if there is a suspected case?

- Designated isolation area
- Parents / Guardian of the student is contacted immediately to arrange collection. They cannot be sent home on public transport
- Ensure social distance
- Staff member wears face mask if social distancing cannot be maintained
- Area is deep cleaned once the student leaves
- Provide a mask for the person presenting with symptoms
- We take advice from the HSE

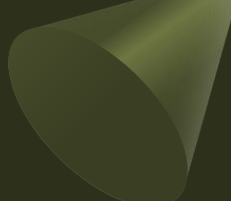


Coronavirus
COVID-19

Visiting the School

- Only with the approval of the Principal
- Only when deemed 'essential'
- Contact Tracing Log
- DCU regulations in place





Reduced number
of Classroom
Based
Assessments

More details
about Junior
Cycle will be
available soon

Some Questions
You May Have –
Junior Cycle



01

Greater choice in
written examinations

02

Dates on coursework
/ projects will be
brought forward

03

Adjustments will be
made to practical
examinations

Some Questions You May
Have...Senior Cycle

Staggered Opening

- Thursday 3rd September – Classes as Normal
- School Meals commence on Thursday
- First Years – focus on Transition
- Rest of the School - Focus on settling back into school



Staggered Opening

Monday 31st August

09:00 – 10:30

3rd Year Students

11:00 – 12:30

6th Year Students

13:00 – 15:00

Staff Meetings

Staggered Opening

Tuesday 1st September

09:00 – 10:30

1st Year Students

11:00 – 12:30

5th Year & 5 LCA Students

13:00 – 14:30

5 LCA Students

Staggered Opening

Wednesday 2nd September

09:00 – 10:30 1st Year Students & 2nd Year Students

11:00 – 12:30 4th Year Students

Possible Return to Remote Learning



- Support
- Encouragement to partake in as much as possible
- Keep up with work
- Maintain social aspect of school
- Google Classroom

New School Rules

Misuse of sanitizer

```
graph TD; A[Misuse of sanitizer] --> B[Misuse of the toilet facilities]; B --> C[Not following social distancing rules (1 or 2 metre distancing)]; C --> D[Misuse of wipes]; D --> E[Misuse of masks];
```

Misuse of the toilet facilities

Not following social distancing rules (1 or 2 metre distancing)

Misuse of wipes

Misuse of masks

Arrival Time to School

No earlier than 8:15am

8:15 AM

8:35 AM

Supervision from 8:35am

Advice & Support

- The National Educational Psychological Service (NEPS) of the Department has developed separate webinars for primary and post-primary schools – *Supporting the Wellbeing of the School Community: Returning to School after Covid-19 School Closure.*



Advice & Support

- www.gov.ie/backtoschool



Advice & Support at Rosmini Community School

- Class Tutors
- Year Heads
- Chaplain: chris.gueret@rosmini.ie
- Home School Community Liaison:
brid.mcmahon@rosmini.ie
- Queries: info@rosmini.ie



Please email the following information

- Dietary Requirements for your son / daughter
- Students that cannot wear face coverings
- 1st 2nd & 3rd Year Year Head paul.faherty@rosmini.ie
- 4th 5th & 6th Year Year Head sean.Gallagher@rosmini.ie
- VI Support donal.digan@rosmini.ie
- All queries to info@rosmini.ie



Parent Nominees for the Board of Management

- Proposed
- Seconded
- Date: Friday 21st August, Midday
- Maybe an election depending on the number of nominees
- Email (please use the email address we now have)



Communication with Students



- We will be sending the students an email during this week to reassure them about the return to school and give them important information



Please...

- Check the website regularly
- Follow us on Twitter
[@RosminiSchool](https://twitter.com/RosminiSchool)

